

Enclosure to Certificate-No TIC 15 100 31717



Berghof Automation GmbH
Arbachtalstraße 26
72800 Eningen / Germany

Following local branches are part of the certificate:

Central office

Berghof Automation GmbH
Arbachtalstraße 26, 72800 Eningen / Germany

Scope:
Development, manufacture and sale of automation solutions with hardware, software and applications

Certificate-No TIC 15 100 31717

Location

Berghof Automation GmbH
Langensalzaer Landstraße 23, 99974 Mühlhausen / Germany

Scope:
Development, manufacture and sale of automation solutions with hardware, software and applications

Certificate-No TIC 15 100 31717/1

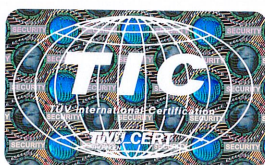
TÜV Thüringen e.V.
Certification body for
systems and personnel



Jena, 2021-07-26



Deutsche
Akkreditierungsstelle
D-ZM-16006-05-01



Original certificates
are branded with a hologram.

This annex is valid only in connection with the certificate No TIC 15 100 31717/07/21